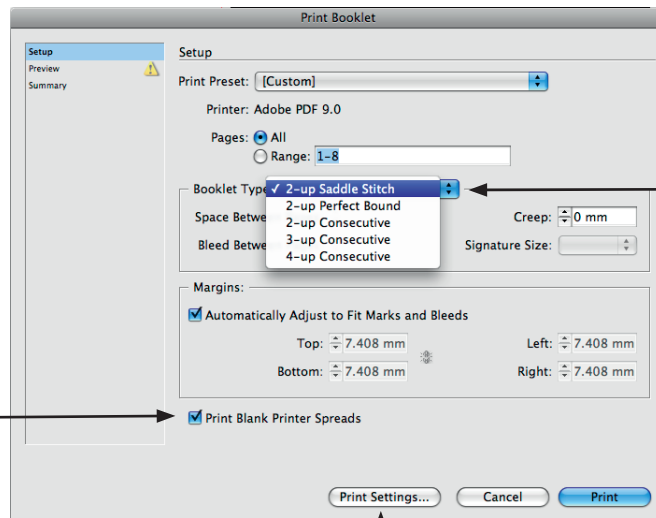


InDesign has a very useful feature for imposing your spreads when printing a multipage document. I recommend that you export your document as a PDF when you impose it. The following handout is a step by step guide to producing an imposed multipage PDF document that would be suitable to pass onto a printer.

**1** When you have completed designing your document and are ready to print; go to File > Print Booklet.



Choose your Booklet Type.  
If you are having your booklet printed and bound by a printer you will need to ask them for a Creep value and a Signature Size if you are having your booklet Perfect Bound

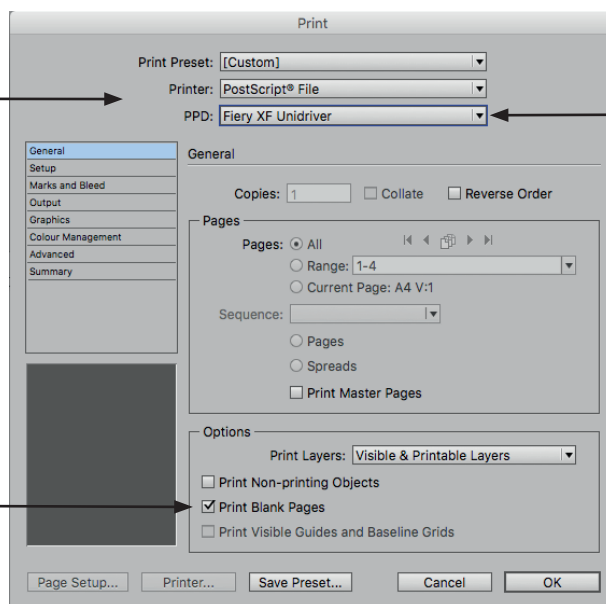
Tick Print Blank Printer Spreads

**3**

**2**

**4**

Click Print Settings...



Set the Printer to PostScript® File

**5**

**6**

Choose: Fiery XF Unidriver

Tick Print Blank Pages

**7**





Choose Setup **8**

Choose your paper size; big enough to fit a spread with bleed and slug **9**

Choose orientation **10**

Set Page Position to Centred **11**

Print Preset: [Custom]  
Printer: PostScript® File  
PPD: EFI Colorproof XF

General  
Setup  
Marks and Bleed  
Output  
Graphics  
Colour Management  
Advanced  
Summary

Setup

Paper Size: A3 WIDE (320 x 450...)  
Width: 319.969 mm Height: 450.144 mm  
Offset:   
Gap:   
 Transverse

Orientation:   
 Portrait  Landscape  Wide  Tall

Options

Scale:  Width: 100% Height: 100%  Scale To Fit  
 Constrain Proportions

Page Position: Centred

Thumbnails: Per Page  
 Tile: Overlap:

Page Setup... Printer... Save Preset... Cancel OK



Choose Marks & Bleed **12**

Choose Crop Marks **13**

Best to ask your printer what other marks he might require. If in doubt, make sure Registration Marks is ticked.

Make certain for the Bleed you tick Use Document Bleed Settings **14**

Use Document Bleed Settings

Click OK **15**

Print Preset: [Custom]  
Printer: Adobe PDF 9.0  
PPD: Adobe PDF 9.0

General  
Setup  
Marks and Bleed  
Output  
Graphics  
Colour Management  
Advanced  
Summary

Marks and Bleed

Marks

All Printer's Marks Type: Default  
 Crop Marks Weight: 0.25 pt  
 Bleed Marks Offset: 2.117 mm  
 Registration Marks  
 Colour Bars  
 Page Information

Bleed and Slug

Use Document Bleed Settings

Bleed:

Top: 3 mm Left: 3 mm  
Bottom: 3 mm Right: 3 mm

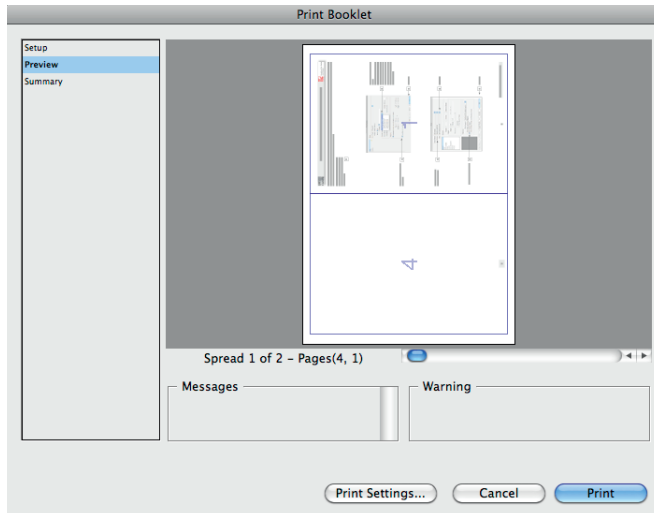
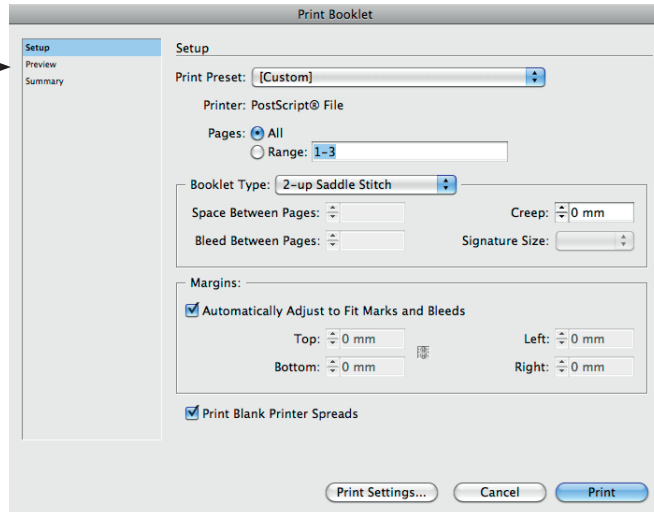
Include Slug Area

Page Setup... Printer... Save Preset... Cancel OK



Choose Preview

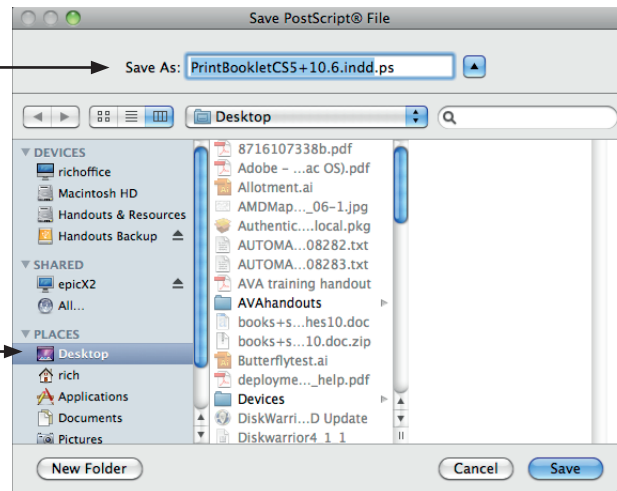
16



17 Click Print

Name your file

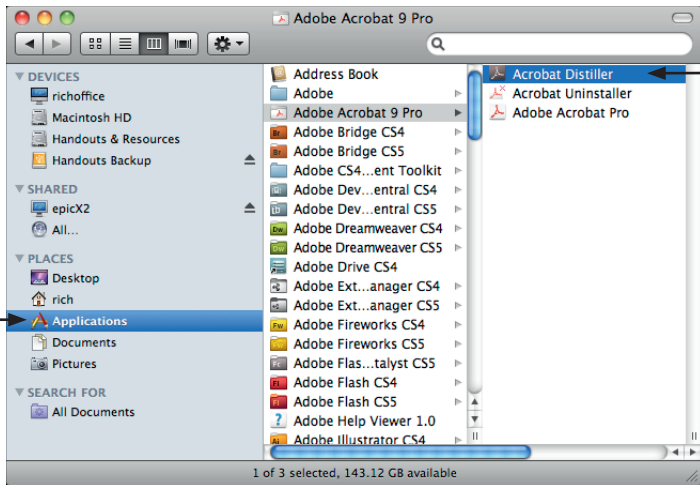
18



Navigate to your InDesign project folder

19

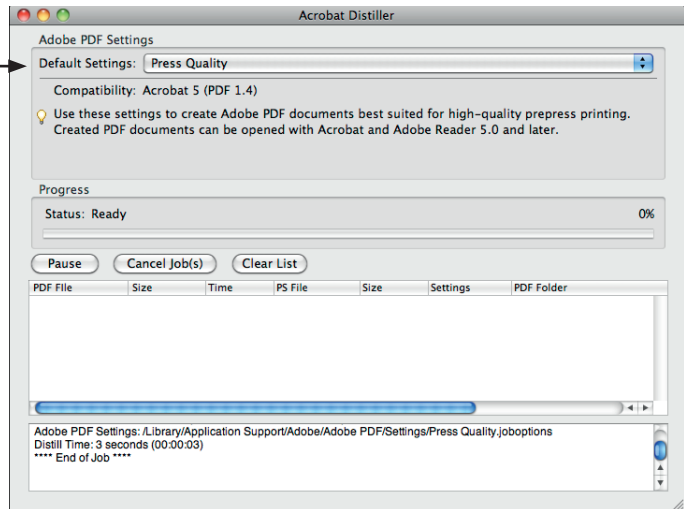
20 Click Save



Go to Applications > Adobe Acrobat Pro > Acrobat Distiller

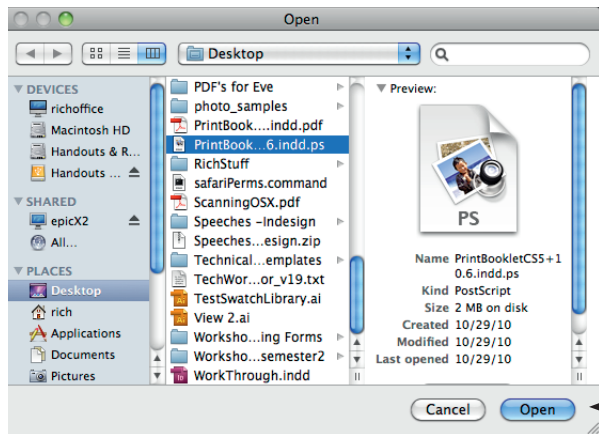
21

22 Double click to launch Distiller



Choose Press Quality from the Default Settings menu

23



File > Open > navigate to your postscript file and select it

24

25 Click Open

Distiller will generate a PDF version of your document you can then open and check using Acrobat Pro or Acrobat Reader.